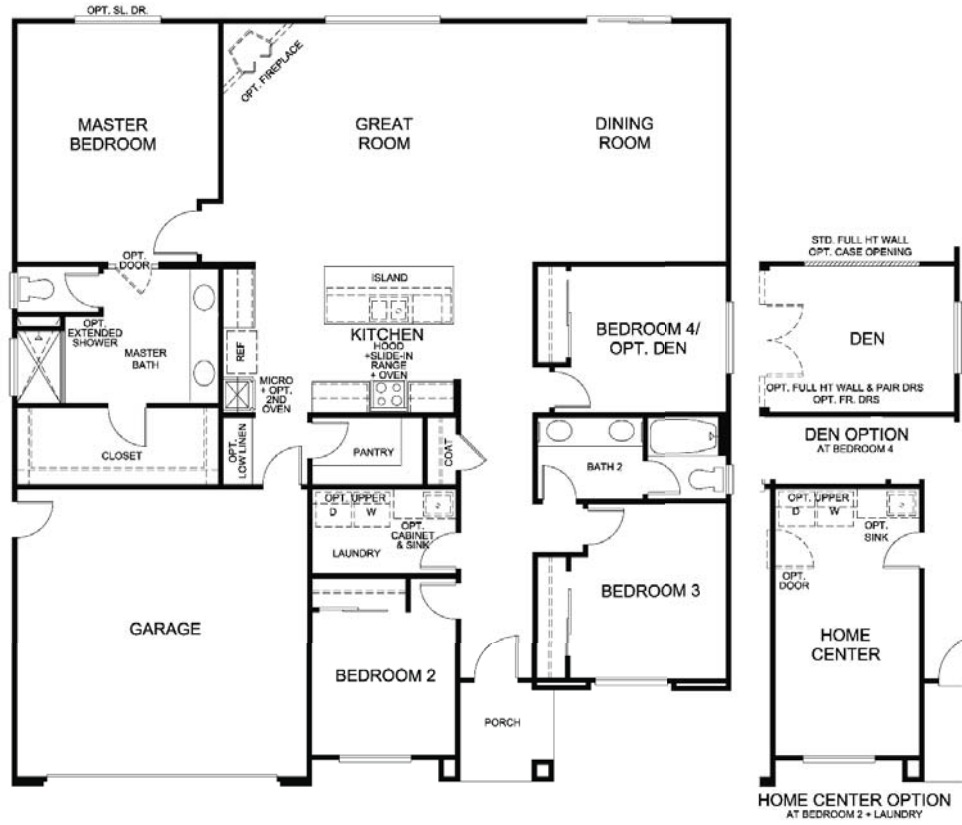
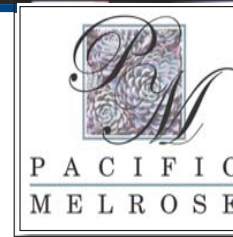


Plan 1



A



B



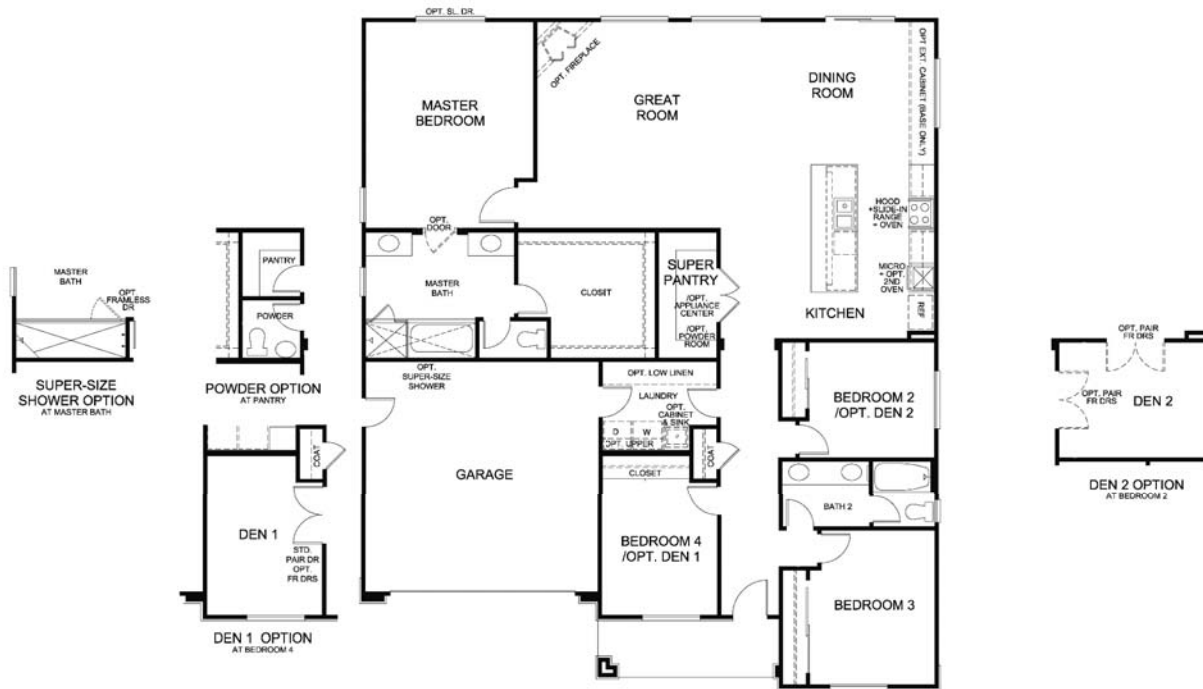
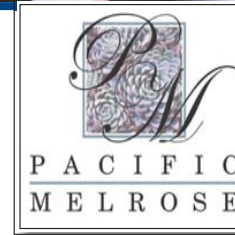
C

- 2,088 Square Feet
- 4 Bedrooms
- 2 Baths
- 2-Car Garage
- Optional Home Center
- Optional Den



*All square footages are approximate and are subject to change. Floorplans & renderings are artist's concepts and are not to scale.

Plan 2



A



B



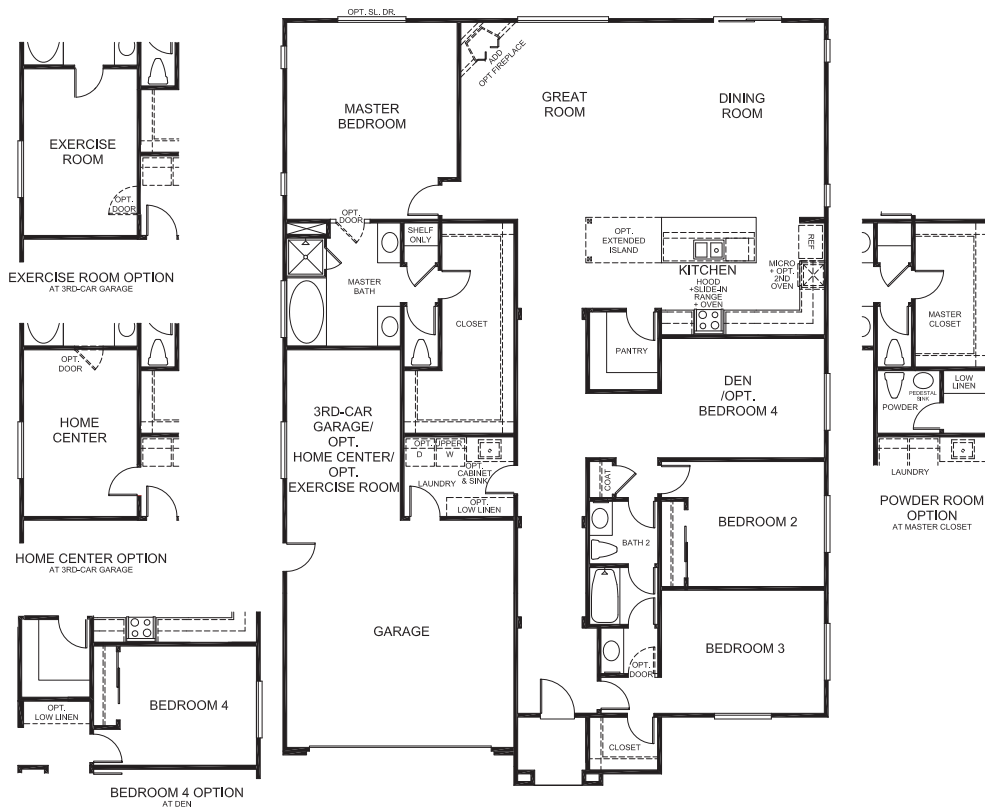
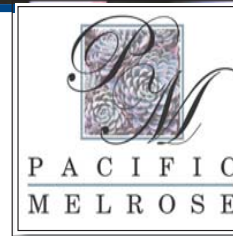
C

- 2,223 Square Feet
- 4 Bedrooms
- 2 Baths
- 2-Car Garage
- Optional Powder Room
- Optional Den



*All square footages are approximate and are subject to change. Floorplans & renderings are artist's concepts and are not to scale.

Plan 3



A



B



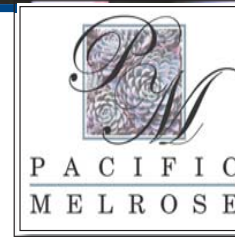
C

- 2,477-2,632 Square Feet
- 3 Bedrooms + Den
- 2 Baths
- Optional Home Center
- 3-Car Garage
- Optional Bedroom 4
- Optional Exercise Room
- Optional Powder Room



*All square footages are approximate and are subject to change. Floorplans & renderings are artist's concepts and are not to scale.

Plan 4

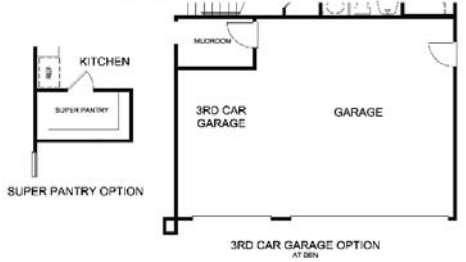
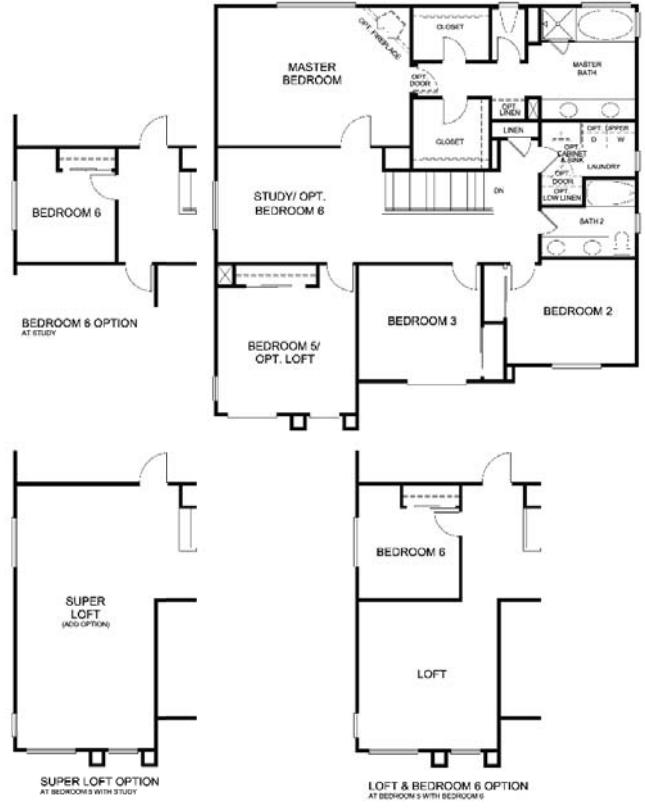
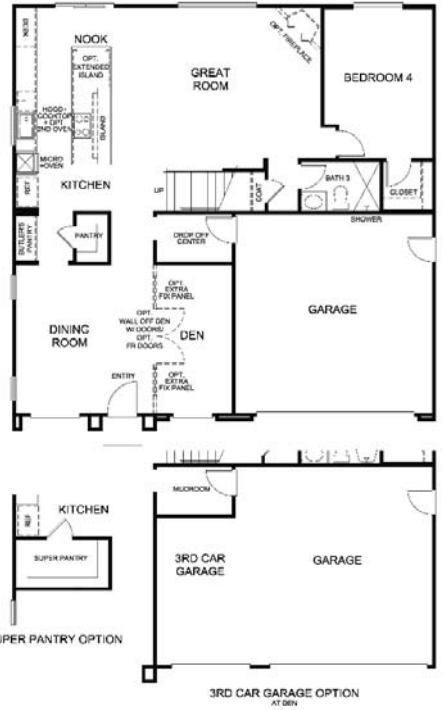
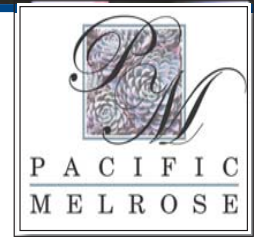


- 2,733 Square Feet
- 4 Bedrooms + Super Loft
- 3 Baths
- Optional Den/ Office
- 2-Car Garage
- Optional Retreat
- Optional Super Suite



*All square footages are approximate and are subject to change. Floorplans & renderings are artist's concepts and are not to scale.

Plan 5



- 2,889 - 3,021 Square Feet
- 5 Bedrooms + Den + Study
- 3 Baths
- 2-Car Garage
- Optional 3rd Car Garage



A



B

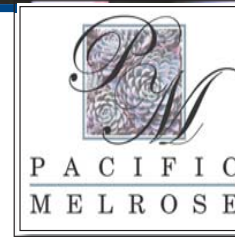


C



*All square footages are approximate and are subject to change. Floorplans & renderings are artist's concepts and are not to scale.

Premium Standard Features Included



Phase 4 Onwards

Distinctive Exteriors

- Beautiful early California architecture
- Durable, fire resistant concrete tile roof
- Elegant fiberglass door entries
- 2 & 3 Car garages with door opener
- Garage direct access to interior & side yard
- Beautiful stone veneer and sidings on selected elevations
- Concrete driveway & walkway
- Rear gas stub & underground utilities
- Front & rear exterior weatherproof outlets
- Turf free front yard landscaping with automatic drip system
- Rear & side yard vinyl or block wall fencing
- Designer selected exterior lighting

Interior Detailing

- Up to 12 ft ceiling height in Plans 1,2,3
- Stylish slab Granite or Quartz countertops throughout
- White Shaker cabinets throughout
- Elegant 12x12 ceramic tile entry
- Plush wall-to-wall carpeting
- Pre-wired for telephone lines in all bedrooms, den & kitchen
- CAT5 wiring to all bedrooms, den & kitchen
- RG-6 coaxial cable television outlets in all bedrooms, den & great room
- White-framed mirrored wardrobe doors in all standard bedrooms
- Pre-wired ceiling fan outlets in great room & master bedroom
- Interior laundry area (pre-plumbed for sink)
- Designer selected light fixtures & recessed lighting
- Decora style dimmer switches
- Motion sensor switches in all bathrooms
- Two panel "Cheyenne" interior doors

- Oil-rubbed bronze lever door interior hardware
- Smoke & carbon monoxide detectors (per code)

Kitchen

- Stylish slab Granite or Quartz countertops
- White Shaker cabinetry
- Kitchen island with eating bar
- Spacious kitchen pantries
- G.E. white appliances:
 - Dishwasher with power saving drying cycle
 - Free standing range with sealed burners & self-cleaning oven (Plan 1-4)
 - Cooktop with five sealed burners (Plan 5)
 - Ultra quiet & powerful hood
 - Built-in self & steam clean oven (Plan 5)
 - Built-in microwave with sensor cooking controls
- Refrigerator area plumbed for ice maker
- Stainless steel under-mount double bowl kitchen sink with garbage disposal
- Moen Arbor chrome one-handle high arc pull-out faucet

Elegant Master Suites

- Stylish slab Granite or Quartz countertops
- White Shaker cabinetry
- Spacious walk-in closet
- Compartmented master bath
- Chrome framed clear glass shower enclosure
- Dual top-mount vanity sink
- Wide spread Moen chrome faucets

Conserving Precious Energy

- Central heating & air conditioning system with automatic digital thermostat
- EPA WaterSense shower head & faucet
- Water-conserving elongated toilets
- White vinyl dual-paned windows with low-E glass
- Energy efficient tankless gas water heater
- Weather-stripping for entry & access doors

- QuietCool Advanced Whole House Fan
- Conduit for Future Solar System

Customizing Options

- Alternate room options
- Artificial turf in front yard
- Variety upgrades of flooring, window treatments & others available at the Design Center
- Environmentally friendly gas burning fireplace
- G.E. refrigerator, washer & dryer, wine center
- Stainless steel or slate appliances
- Secondary built-in oven under microwave
- Stainless steel apron under-mount kitchen sink
- Expanded kitchen island
- Cabinet door, stain, knobs & handle upgrade
- Glass pantry door & appliance center option at pantry
- Cabinets and sink in laundry room
- Sliding glass door at master bedroom
- 2-sided mirror doors at master closet
- Entry door with glass inserts
- Grab bars in bathrooms, ADA height toilet
- Recessed lighting packages & additional wiring
- Surround sound and security system
- Upgraded baseboards & crown molding
- Epoxy garage floor & rain gutters
- Pre-wire holiday package
- Framed mirrors in master & secondary bathrooms
- Masters Walk in Closet Systems
- Garage over head Storage & work station



*Seller reserves the right to change prices, floorplans, features & specifications without notice or obligation.