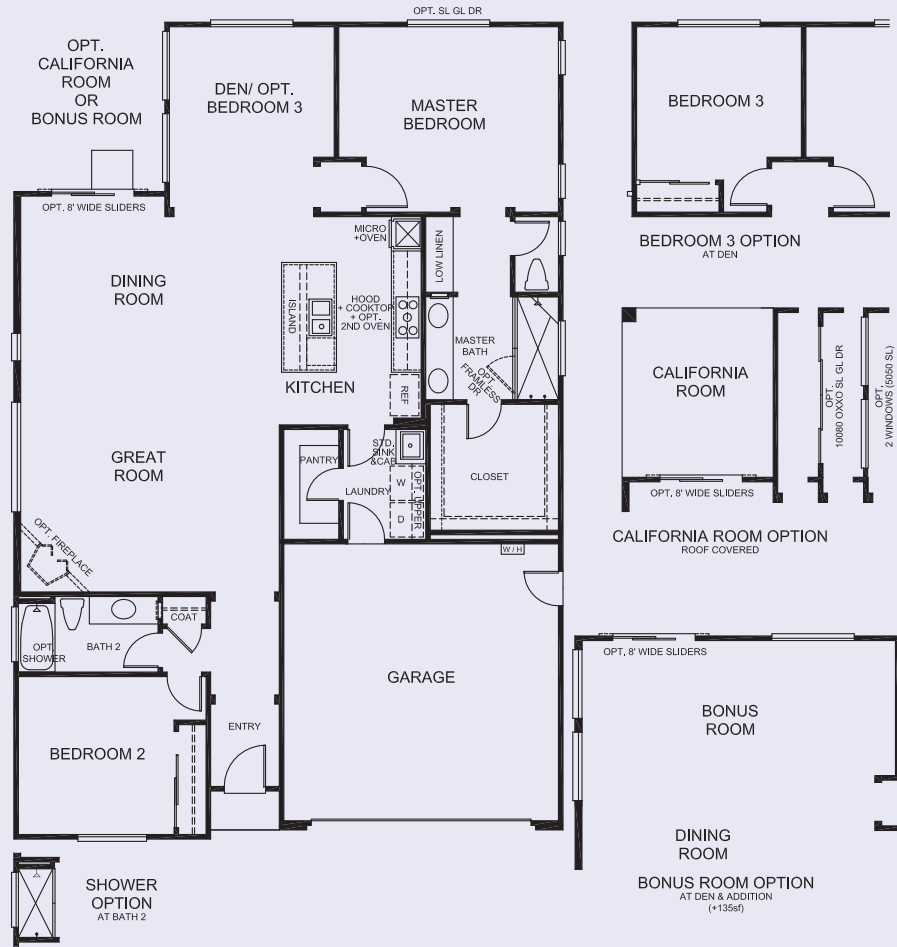
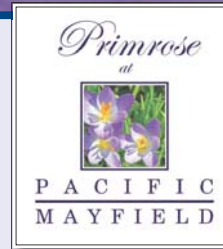


Plan 1



A



B



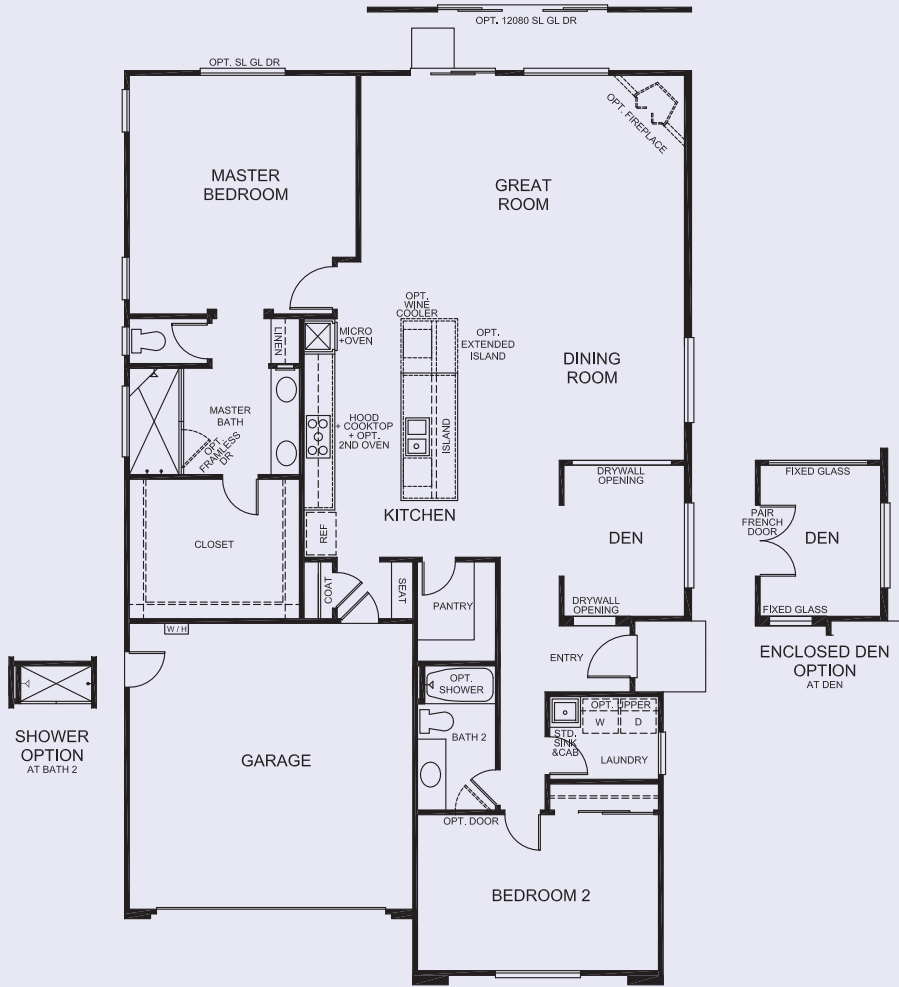
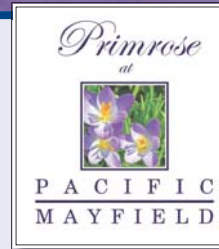
C

- 1,788 Square Feet
- 2 Bedrooms
- 2 Baths
- Den
- 2-Car Garage
- Optional Bedroom 3
- Optional California Room
- Optional Bonus Room



All square footages are approximate and are subject to change. Floorplans & renderings are artist's concepts and are not to scale.

Plan 2



A



B



C

- 1,988 Square Feet
- 2-Car Garage
- 2 Bedrooms
- Optional Enclosed Den
- 2 Baths
- Den



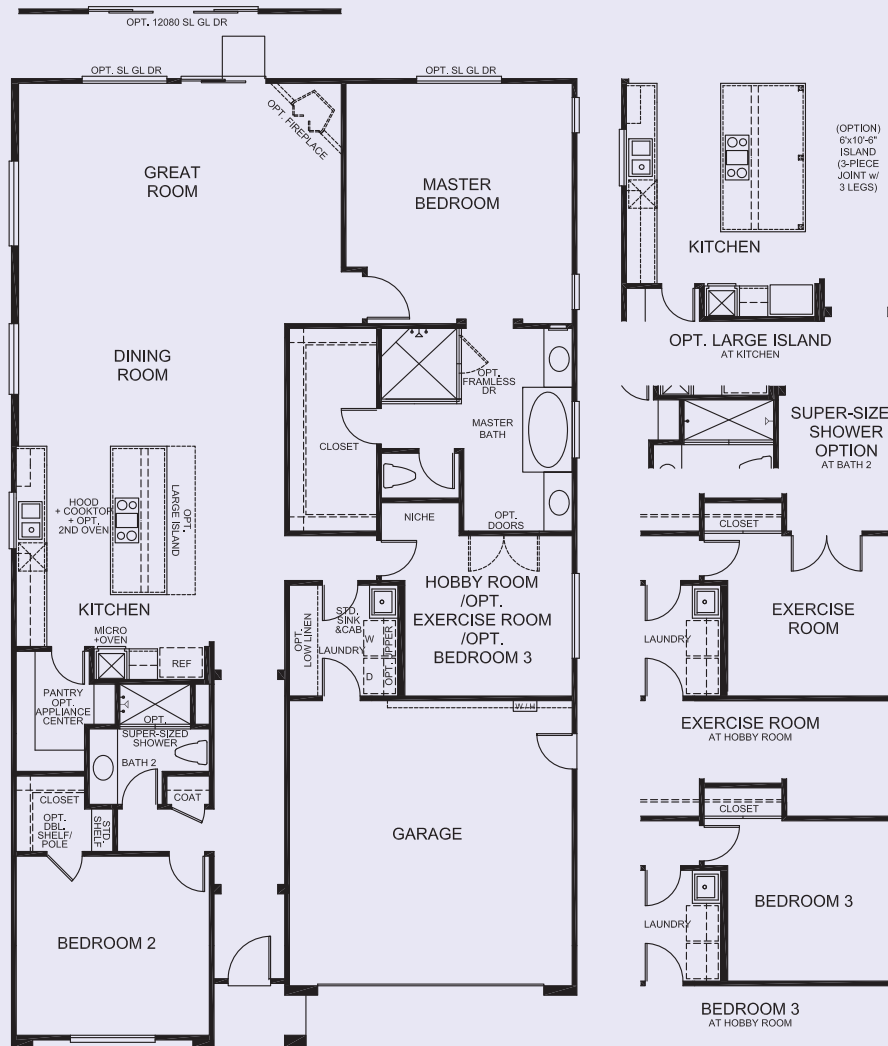
All square footages are approximate and are subject to change. Floorplans & renderings are artist's concepts and are not to scale.

Plan 3

Primrose
at



PACIFIC
MAYFIELD



A



B



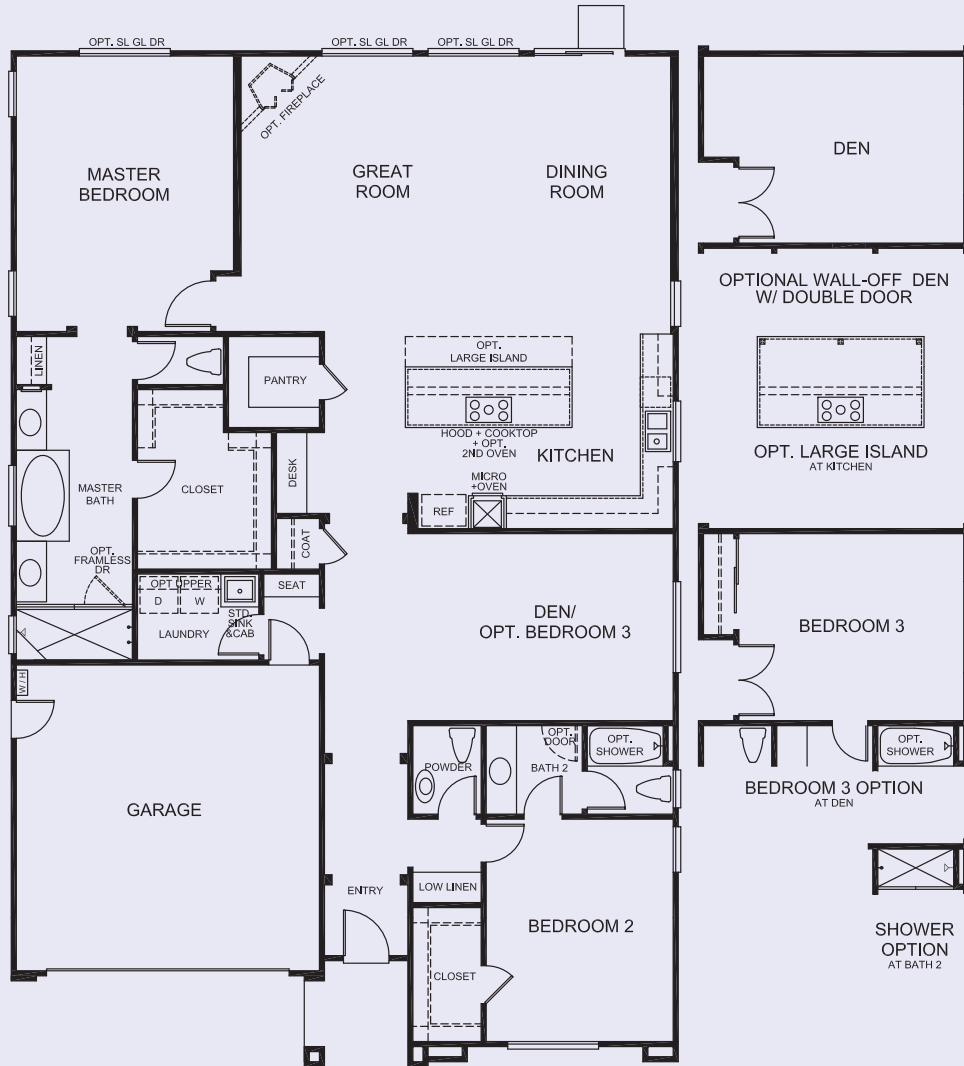
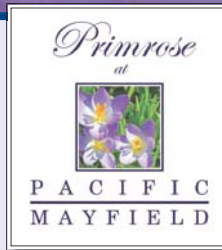
C

- 2,210 Square Feet
- 2-Car Garage
- 2 Bedrooms
- Optional Exercise Room
- 2 Baths
- Optional Bedroom 3
- Hobby Room

PACIFIC
COMMUNITIES

All square footages are approximate and are subject to change. Floorplans & renderings are artist's concepts and are not to scale.

Plan 4



- 2,344 Square Feet
- 2 Bedrooms
- 2.5 Baths
- Den
- 2-Car Garage
- Optional Bedroom 3



A



B



C



All square footages are approximate and are subject to change. Floorplans & renderings are artist's concepts and are not to scale.

Premium Standard Features Included



Phase 2 Onwards

Distinctive Exteriors

- Beautiful early California architecture
- Durable, fire resistant concrete tile roof
- Elegant fiberglass door entries
- 2 Car garage door with opener & designer windows
- Garage direct access to interior & side yard
- Beautiful stone veneer and sidings on selected elevations
- Concrete driveway & walkway
- Rear gas stub & underground utilities
- Front & rear exterior weatherproof outlets
- Holiday lighting receptacle with switch
- Turf free front yard landscaping with automatic drip system
- Rear & side yard vinyl or block wall fencing
- Designer selected exterior lighting

Interior Detailing

- Stylish slab Granite or Quartz countertops throughout
- White Maple cabinets throughout w/ satin nickel knob
- Elegant 12x12 ceramic tile entry
- Plush wall-to-wall carpeting
- LED recess lights throughout
- Pre-wired for telephone lines in all bedrooms, den & kitchen
- CAT5 wiring to all bedrooms, den & kitchen
- RG-6 coaxial cable television outlets in all bedrooms, den & great room
- Pre-wired security alarm system
- Designer selected light fixtures & recessed lighting
- Decora style dimmer switches
- Motion sensor switches in all bathrooms
- Laundry white Thermofoil base cabinets & sink
- Bypass wardrobe doors in secondary bedrooms
- Two panel classic interior doors

- Oil-rubbed bronze lever door interior hardware
- Smoke & carbon monoxide detectors (per code)

Kitchen

- Stylish slab Granite or Quartz countertops
- White Maple cabinetry
- Kitchen island with eating bar
- Spacious kitchen pantries
- Elegant ceramic tile floor
- G.E. stainless steel appliances:
 - Dishwasher with power saving drying cycle
 - Cooktop with five sealed burners
 - Ultra quiet & powerful hood
 - Built-in self & steam clean oven
 - Built-in microwave with sensor cooking controls
- Refrigerator area plumbed for ice maker
- Stainless steel under-mount double bowl kitchen sink with garbage disposal
- Moen Arbor chrome one-handle high arc pull-out faucet

Elegant Master Suites

- Stylish slab Granite or Quartz countertops
- White Maple cabinetry
- Elegant ceramic tile floor
- Spacious walk-in closet
- Compartmented master bath
- Tiled shower with seat & shampoo niche
- Chrome framed clear glass shower enclosure
- Dual square under-mount vanity sink
- Wide spread Moen chrome faucets
- Framed medicine cabinet with no-rust interior and adjustable shelves
- Designer selected light fixtures
- Luxury tub with roman faucet (in plan 3 & 4)

Conserving Precious Energy

- Central heating & air conditioning system with automatic digital thermostat

- EPA WaterSense shower head & faucet
- Water-conserving elongated toilets
- White vinyl dual-paned windows with low-E glass
- Energy efficient tankless gas water heater
- Weather-stripping for entry & access doors
- QuietCool Advanced Whole House Fan
- Conduit for Future Solar System

Customizing Options

- Alternate room options
- Artificial turf in front yard
- Variety upgrades of flooring, window treatments & others available at the Design Center
- Environmentally friendly gas burning fireplace
- G.E. refrigerator, washer & dryer, wine center, food warmer
- G.E. profile or Café series appliance package
- Secondary built-in oven under cooktop
- Stainless steel apron under-mount kitchen sink
- Expanded kitchen island
- Waterfall kitchen island counter
- Cabinet door, stain, knobs & handle upgrade
- Glass pantry door & appliance center option at pantry
- Upper cabinets in laundry room
- Sliding glass door at master bedroom
- 2-sided mirror doors at master closet
- Entry door with glass inserts
- Grab bars in bathrooms, ADA height toilet
- Recessed lighting packages & additional wiring
- Surround sound and security system
- Upgraded baseboards & crown molding
- Epoxy garage floor & rain gutters
- Framed mirrors in master & secondary bathrooms



*Seller reserves the right to change prices, floorplans, features & specifications without notice or obligation.